

# TIGERTEC

CNC excellence

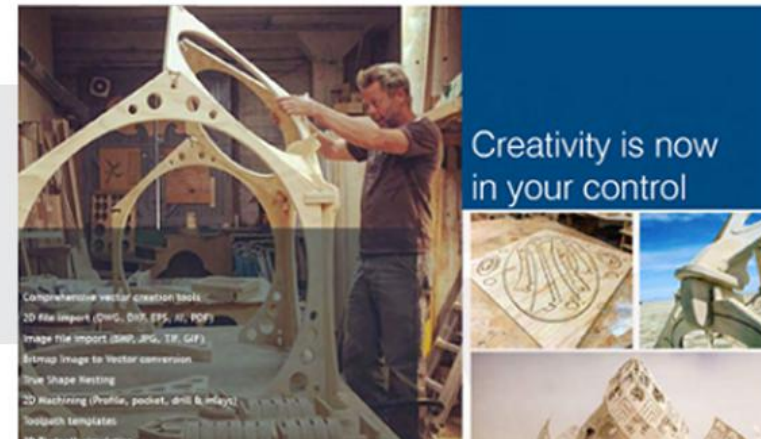
## TR408 SHOP



**HSD**  
MECHATRONIC  
SOLUTIONS

**Vetric**  
PASSIONATE ABOUT CNC

Features an industrial-grade, HSD router head, constructed in a one-piece welded steel frame, designed for simplicity and easy-of-use with high value, performance and cost-effectiveness.



Creativity is now  
in your control

# TIGERTEC

CNC excellence



## Reinforced gantry

The gantry is constructed of tubular steel with reinforcing ribs, welded throughout the length of the column, which results in a steady firm beam assembly. This quality engineering and workmanship result in smooth precision cutting.



## Multifunction table

The vacuum plenum table surface is single-zoned, which is controlled via main gate valve. The table can be zoned by easily moving gasket around to customize specific sections. Gasketing can also be routed to accommodate various material sizes and styles.



## HSD spindle: quality power reliability precision

all TigerTec CNC router are fitted with Italian HSD router spindles which are proven, renowned and reliable, serviceable the world over and easy to replace should the unforeseen catastrophic happen.

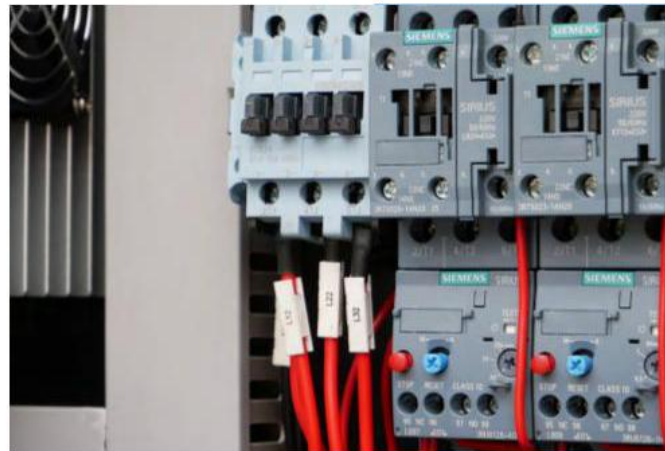
This manual tool change machine has a continuously rated 6.0 kw[81] electro spindle which can peak 40% of the time at 7.2 KW[80-9.78hp]-you have plenty of power on tap.

**HSD**  
MECHATRONIC  
SOLUTIONS



## Quality mechanical parts

including precision rack and pinion drive. The heavy duty fully enclosed energy chain prevents ingress of chips and dust reducing wear.



## Quality control components

Siemens contactors with a robust and reliable, traceable, numbered wiring scheme gives you long term peace of mind.



## Easy to control

the easy to use NK 105 hand held control keeps you informed and the mobile control at your finger tips.

**TigerTec TR408 SHOP Series** CNC Routers are extremely flexible machines. We designed them for easy configuration to meet high speed routing application requirements. Ideal for Sign Making, Prototyping, Model Making, Engraving, Woodworking, Metal Engraving, Plastics, Foam, Educational Applications and General Fabrication.

The heart of the machine is an Italian HSD {part of Biesse} router head which can peak at 9.78 hp {S6}. Control is with an easy to use DSP hand-held mobile. The controller is user-friendly for easy installation and training. Each command is very easy to read, understand, and execute.

The multifunctional table is prepared for mechanical clamping as standard and is prepared with a multi-zone vacuum system for the optional vacuum pump.

#### **Outstanding Features:**

- \* 1240×2460mm (4' × 8') process area
- \* Easy to Use Hand-held controller
- \* With a 3.0KW HSD high frequency spindle
- \* TigerTec rack pinion and Linear rails on all 3-axes
- \* Maintenance free brushless stepper drive motors
- \* T-slot working table with T-clamp for fixing the processing materials

#### **Options:**

- \* 6.0KW, 7.0KW Spindle available upon request.
- \* 5'x 10', 7'x 10' and 7' x 12' stock sizes (Special sizes available upon request)
- \* Optional PC based system available
- \* T-slot vacuum working table
- \* Japan THK linear rail
- \* Germany WMH Helical rack pinion
- \* Servo driving system
- \* Mist cooling system
- \* Lubricating system
- \* Dust collector
- \* Vacuum pumps from China or Germany for your choice

#### **Applied materials:**

Designed to cut a multitude of materials such as composite materials, foam, plastic, solid wood, soft wood, acrylic, MDF, bamboo, PVC, double color board, brass, copper, aluminum and ACP etc.

We can provide training inhouse in our factory or we can offer on site training and installation.

#### **About TigerTec**

TigerTec are a Sino-US joint venture and one of the leading manufacturers in the field for compact CNC Routers manufacturing for other well known European and American companies. All components used are from quality renowned suppliers.

#### **Class leading features:**

- HSD Router head
- Siemens contactors
- Delta inverter
- Rack & Pinion drive
- HIWIN HG20 linear guides for 3 axes
- Multifunctional T-slot vacuum working table
- Fully enclosed cable track





Integrated tool sensor  
allows you to set exact tool length  
when changing tools.

## TR408 SHOP

### Technical Specification:

Working area:	1240×2460 mm
Z Axis:	200mm
Max cutting speed:	20m/min
Max moving speed:	45m/min
Control:	DSP NK105 G2
Drive:	Synchronous steppers
Transmission:	Rack pinion
Router head:	3.0KW HSD
Max speed:	18000rpm
Collet size:	ER25
Table:	Multifunction
Vacuum pump:	Optional
Weight:	1500KGS

